

Compal Confidential

Model Name : Q5WV1/Q5WS1/Q5WPH/Q5WTC

File Name : LS-7911P

Compal Confidential

VA50-CR/VG50-CR/EG S/B Schematics Document

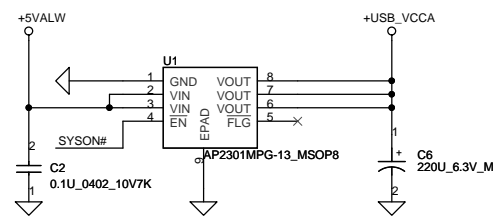
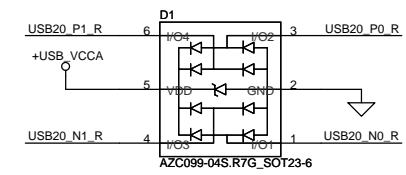
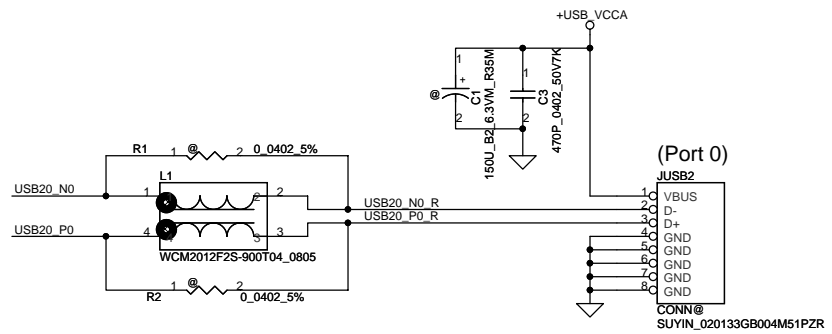
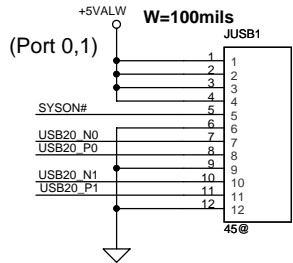
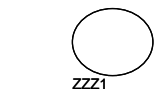
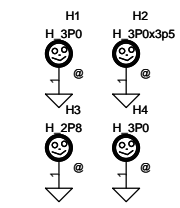
2011-09-09
0.2

LS-7911P REV0 USB/B	
Part Number	Description
DA400017D00	PCB OMD LS-7911P REV0 USB/B

Security Classification		Compal Secret Data				Compal Electronics, Inc.							
Issued Date		2009/08/01		Deciphered Date		2010/08/01		Title					
THIS SHEET OF ENGINEERING DRAWING IS THE PROPRIETARY PROPERTY OF COMPAL ELECTRONICS, INC. AND CONTAINS CONFIDENTIAL AND TRADE SECRET INFORMATION. THIS SHEET MAY NOT BE TRANSFERRED FROM THE CUSTODY OF THE COMPETENT DIVISION OF R&D DEPARTMENT EXCEPT AS AUTHORIZED BY COMPAL ELECTRONICS, INC. NEITHER THIS SHEET NOR THE INFORMATION IT CONTAINS MAY BE USED BY OR DISCLOSED TO ANY THIRD PARTY WITHOUT PRIOR WRITTEN CONSENT OF COMPAL ELECTRONICS, INC.								SCHEMATIC USB/B LS-7911					
								Size	Document Number			Rev	
								Custom	405NX6			C	
								Date:	Thursday, December 29, 2011		Sheet	1	of

COMPAL CONFIDENTIAL

MODEL NAME: Q5WV1/Q5WS1/Q5WPH/Q5WTC
PCB NAME: LS-7911P USB 2P/B
COMPAL P/N: DA400017D00
REVISION: 0.2
DATE: 2011/09/20



Security Classification		Compal Secret Data		Compal Electronics, Inc.	
Issued Date	2009/09/02	Deciphered Date	2010/09/02	Title	
THIS SHEET OF ENGINEERING DRAWING IS THE PROPRIETARY PROPERTY OF COMPAL ELECTRONICS, INC. AND CONTAINS CONFIDENTIAL AND TRADE SECRET INFORMATION. THIS SHEET MAY NOT BE TRANSFERRED FROM THE CUSTODY OF THE COMPETENT DIVISION OF R&D DEPARTMENT EXCEPT AS AUTHORIZED BY COMPAL ELECTRONICS, INC. NEITHER THIS SHEET NOR THE INFORMATION IT CONTAINS MAY BE USED BY OR DISCLOSED TO ANY THIRD PARTY WITHOUT PRIOR WRITTEN CONSENT OF COMPAL ELECTRONICS, INC.				SCHEMATIC USB/B LS-7911	
Document Number		405NX6		Rev C	
Date:		Thursday, December 29, 2011		Sheet 2 of 2	